

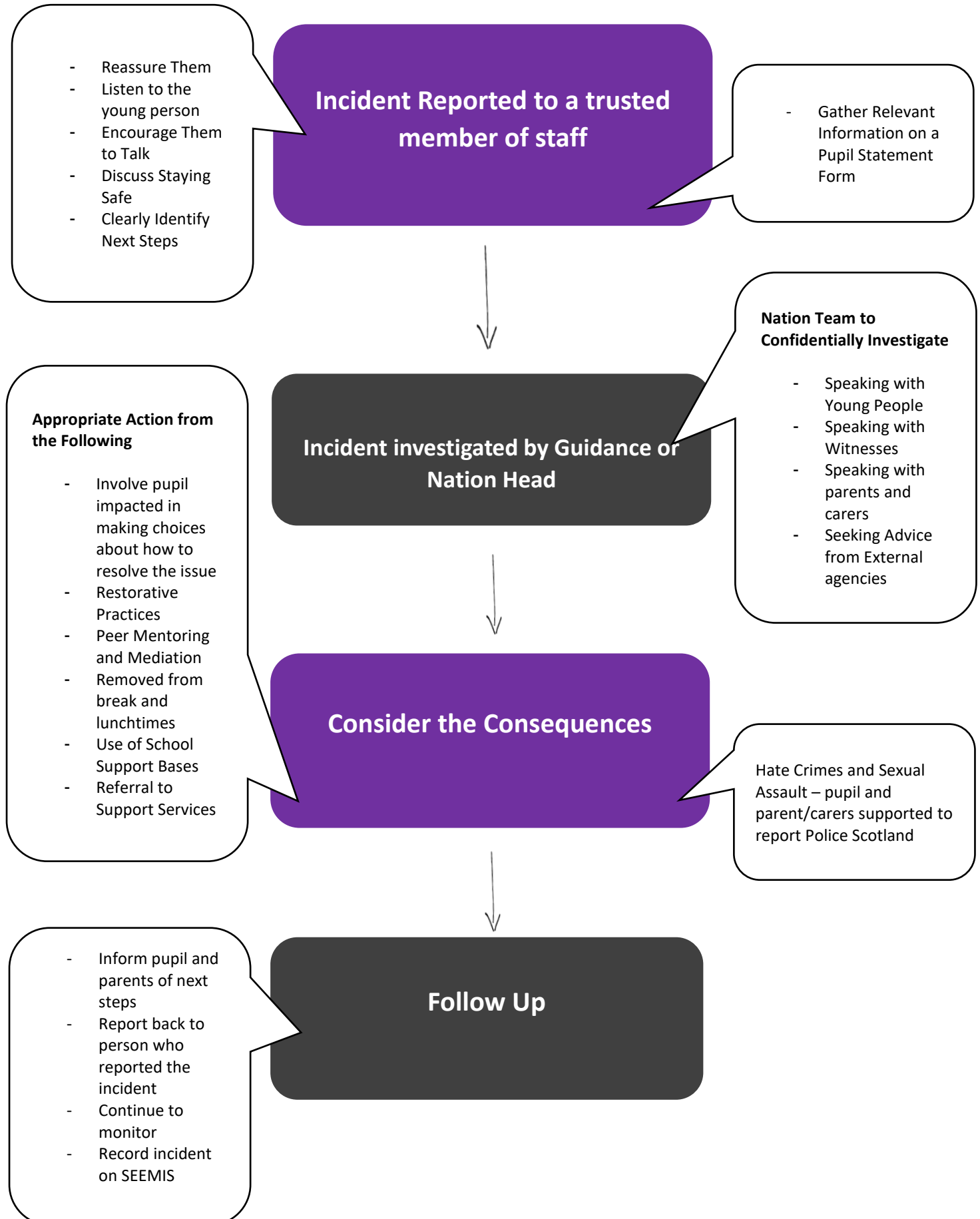


# The Royal High School

## Equalities and Anti-Bullying Policy



### What happens when an incident is reported?





# The Royal High School

## Equalities and Anti-Bullying Policy

### How to support your child



#### How do I support my child?

Work collaboratively and respectfully with staff, children and young people and other parents/carers where appropriate to help ensure bullying, discrimination and prejudice cannot thrive

Speak to any member of staff (the class teacher, guidance teacher or member of senior leadership team) if they have any concerns about bullying, discrimination and prejudice experienced by their child or by another child / children

Monitor closely your child's use of mobile phone and the internet and to intervene if there is a suspicion that these are being used inappropriately

Be aware of *respectme*, Scotland's Anti-bullying Service booklet – Bullying Behaviour: A Guide for Parents and Carers (available at <http://respectme.org.uk/resources/publications/>)

Be aware of the school's complaints procedure and the Council's Advice and Conciliation Service and their rights with regard to these procedures

Be aware that you can contact a relevant external organisation for advice and support

Understand that we seek to understand the experiences and address the needs of all children and young people who experience bullying, discrimination or prejudiced behaviour as well as those who present bullying, discrimination or prejudiced behaviour. We do this within a framework of respect, responsibility, resolution and support

Encourage your children to be positive members of our school community

Speak to the Nation Head if your concerns continue following initial intervention